

EPIC Soli-MaX INDUSTRIAL TYRES

► Resilient Solid Tyres



Resilient Traction

Available both two & three layer/stage



Resilient Traction Non - Marking

Available both two & three layer/stage



Resilient Traction Non - Marking Grey

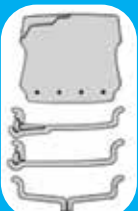
Available both two & three layer/stage



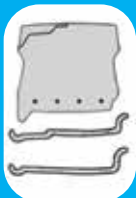
Resilient Ribbed

Unique Feature of Soli-Max Resilient Solid Tyres

- High durability and loading capacity.
- Ensure perfect grip of the tyre and prevent skidding.
- Excellent shock absorption & High steering precision
- Wide lugs allow a larger contact area and reduce specific pressure.
- 100% quality guaranteed.
- Specially designed for heavy duty usage and any surface conditions.
- Driver comfort and low heat build up.
- Minimum rolling resistance and wear resistance.
- Low running cost/fuel consumption for kilometer (km)



Normal Mounting



Quick Mounting



Tread Layer

Specially designed to prevent wear and abrasion properties while improving rolling resistance. Another characteristic is high tear resistance during material handling.

Center Layer

Compounded with premium quality natural rubber (world best RSS grade) which prevent blow-outs and higher fuel consumption. Also specially designed for excellent shock absorption & high steering precision.

Base Layer

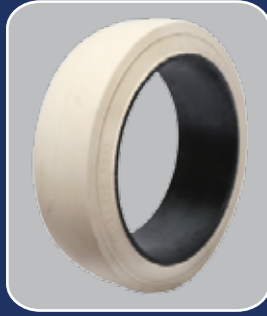
Premium base compound combined with copper-coated steel reinforced wires for stability and strong grip

Copper-Coated Steel Reinforced Wires

▶ Press On Band Solid Tyres



Smooth Normal



Smooth Non - Marking



Smooth Non - Marking 'Grey'



Traction Normal



Traction Non - Marking



Traction Non - Marking 'Grey'

Unique Features of Soli-Max Press On Steel Band Solid Tyres

- Advanced tread designed for best performance in every application.
- Specially designed for lowest rolling resistance and contract pressure.
- Available in both smooth and lug patterns.
- For highest traction as well as tear, chip and chunk resistance in every application.
- High tensile natural rubber compounds bonded to high quality steel bands.

Resilient Tyres Technical Sheet

	Tyre Size	Rim Size	Tread Pattern	Rim Profile	Net Wgt (kg)	Width (mm)	OD (mm)	ID (mm)	Volume (cbm)	Forklift	
										Load Capacity (Kgf)	
										Load W < 16 km/hr	Steering W < 25 km/hr
1	4.00-8	3.00D	Traction	STD/LIP	11.0	104	410	192	0.0175	925	710
2	4.00-8	3.75	Rib	STD/LIP	13.0	121	409	192	0.0202	950	730
3	15x4.5-8	3.00D	Traction	STD/LIP	10.2	115	378	192	0.0164	1040	800
4	5.00-8	3.00D	Traction	STD/LIP	16.4	120	453	192	0.0246	1415	1090
5	16x6-8	4.33R	Traction	STD/LIP	16.3	151	412	197	0.0256	1270	975
6	18x7-8	4.33R	Traction	STD/LIP	21.6	154	455	197	0.0319	2145	1650
7	140/55-9	4.00E	Traction	STD/LIP	11.2	124	378	219	0.0177	1140	875
8	6.00-9	4.00E	Traction	STD/LIP	26.4	141	524	219	0.0387	1885	1450
9	200/50-10	6.50F	Traction	STD/LIP	24.5	191	458	242	0.0401	2470	1900
10	6.50-10	5.00F	Traction	STD/LIP	34.7	170	575	242	0.0562	2340	1800
11	23x9-10	6.50F	Traction	STD/LIP	44.8	196	587	242	0.0675	3160	2430
12	7.00-12	5.00S	Traction	STD/LIP	45.7	164	647	297	0.0687	2920	2240
13	23x10-12	8.00G	Traction	STD/LIP	50.5	218	590	291	0.0792	3770	2900
14	27x10-12	8.00G	Traction	STD/LIP	72.0	230	685	291	0.1079	3900	3000
15	7.00-15	5.50	Traction	STD/LIP	55.7	179	727	376	0.0946	3545	2725
16	7.00-15	6.00	Traction	STD/LIP	56.1	179	727	376	0.0946	3545	2725
17	7.50-15	6.00	Traction	STD/LIP	59.2	190	753	376	0.1077	3900	3000
18	7.50-15	6.50	Traction	STD/LIP	59.7	190	753	376	0.1077	3900	3000
19	28x9-15	7.00	Traction	STD/LIP	60.8	216	690	376	0.1028	3445	2650
20	250-15	7.00	Traction	STD/LIP	68.3	223	723	376	0.1166	4745	3650
21	28x12.5-15	9.75	Traction	STD/LIP	83.0	282	700	376	0.1382	5625	4325
22	8.25-15	6.50	Traction	STD/LIP	87.6	207	846	376	0.1378	4750	3650
23	300-15	8.00	Traction	STD/LIP	108.7	255	825	376	0.2090	5850	4500
24	355/65-15	9.75	Traction	STD	124.6	305	825	376	0.2215	7000	5430
25	9.00-20	7.00	Traction	STD	122.5	228	976	501	0.2267	7815	6005
26	10.00-20	7.50	Traction	STD	148.7	254	1000	501	0.2540	6000	5000



ASSOCIATED MOTORWAYS (PRIVATE) LIMITED.
NAGODA, KALUTARA
SRI LANKA